

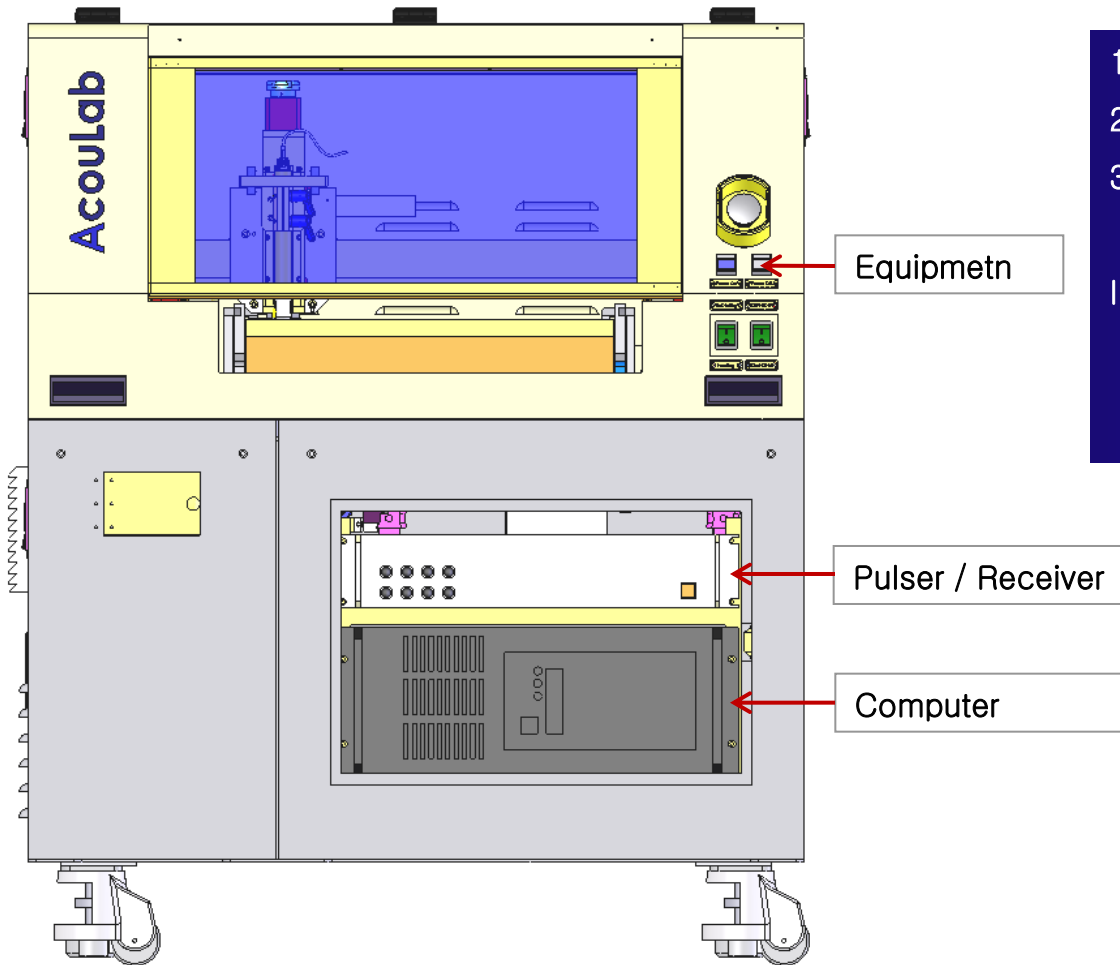
Quick Start



349-2 Samjeong Ohjeong Bucheon Kyunggi Korea
Tel : 82-32-676-8077~8, Fax : 82-32-676-8079



1. Activate the Equipment



1. Turn on the computer.
2. Turn on the Pulser/Receiver.
3. Turn on the equipment.

In case of turning off, turn off in reverse order.

You don't need to turn off the Pulser/Receiver. (on-off light flickers in standby status.)

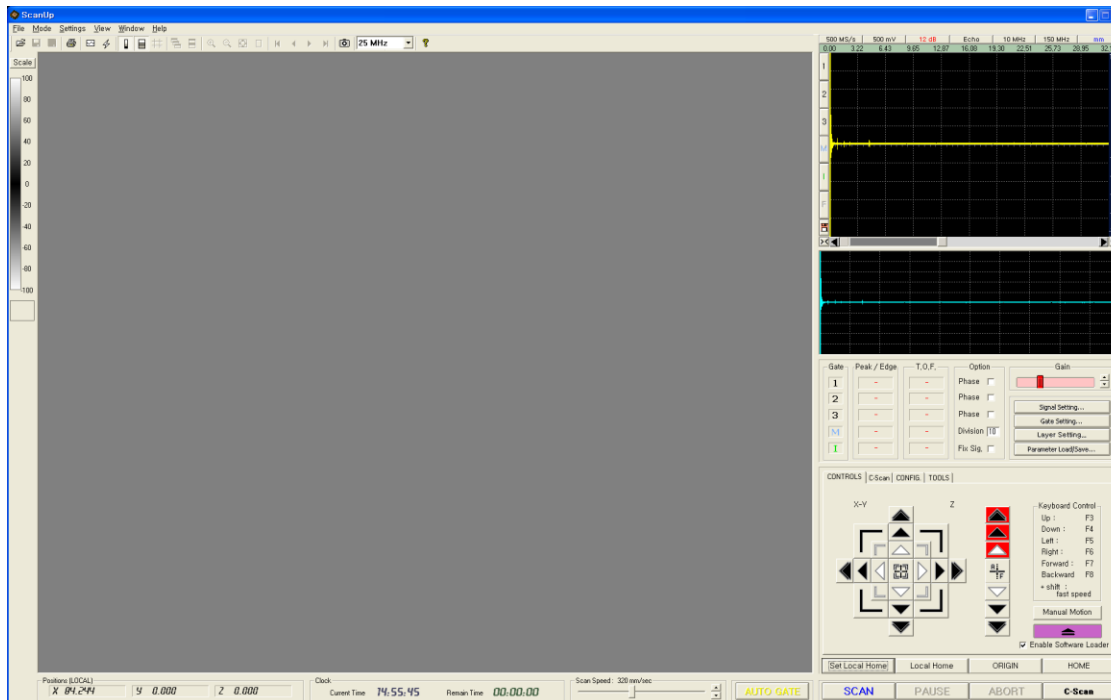
* In case the Pulser / Receiver is not turned on, you need to do the Master Reset. (Refer to the supplement)



2. Run the “ScanUp” program



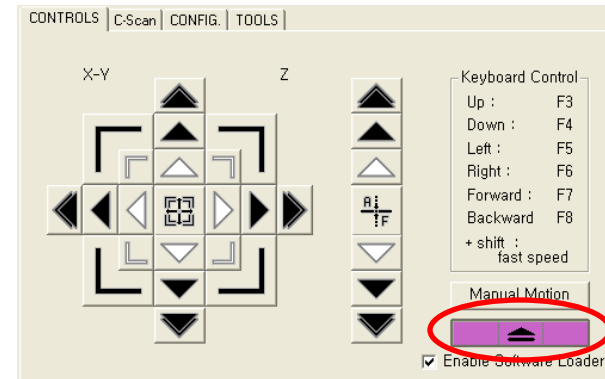
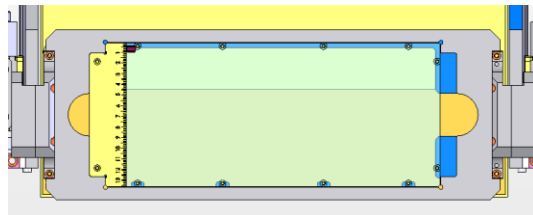
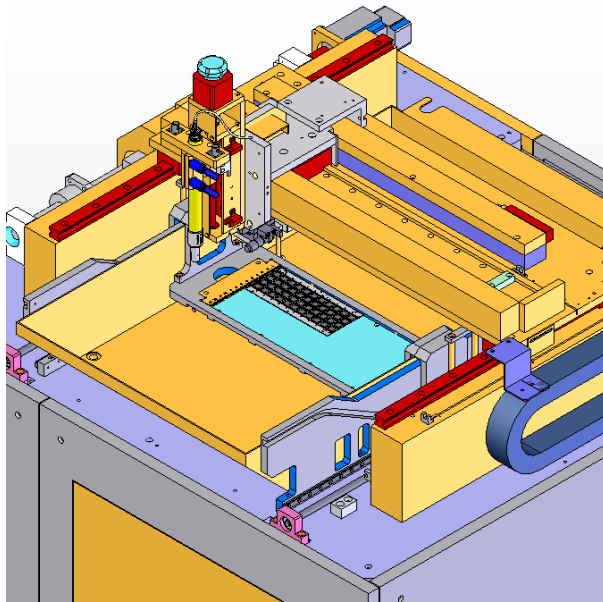
Double click the “ScanUp” icon in the wallpaper on the computer.



* If the control button is in red, that means the axis is near the limit.



3. Put a material



If the material holding stack is under the water, click the uploading button to locate the holding tack outside the water.

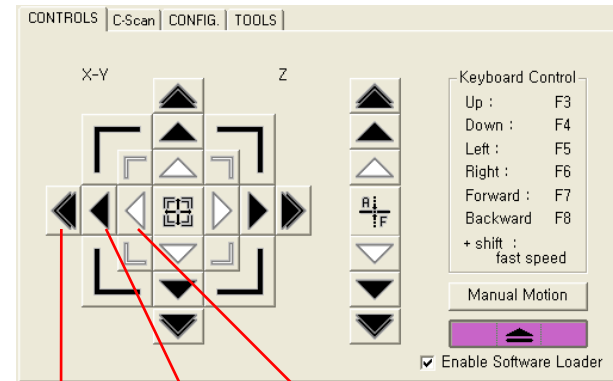
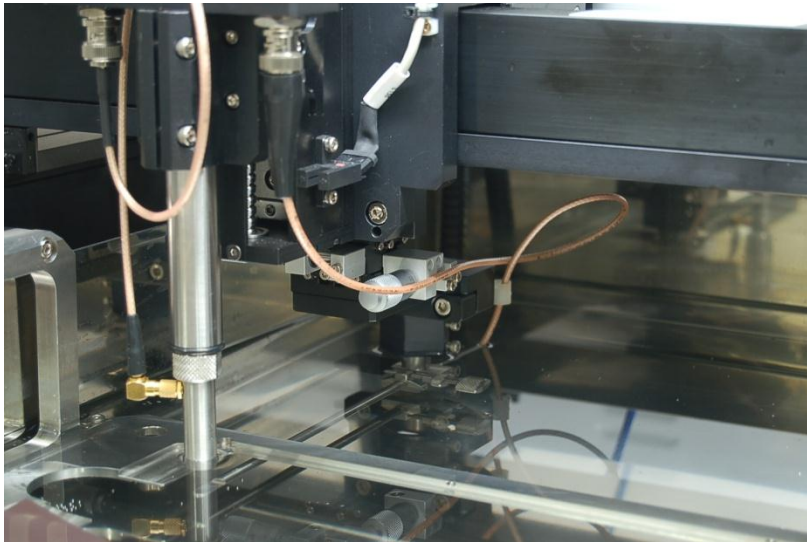


After putting a material on the holding stack, click the downloading button to locate the holding stack inside the water.

* Uploading and downloading functions only work when the X and Y axis are located at the limit. If both functions does not work, check if X and Y axis work well, and the limit switch works well.



4. Move the probe

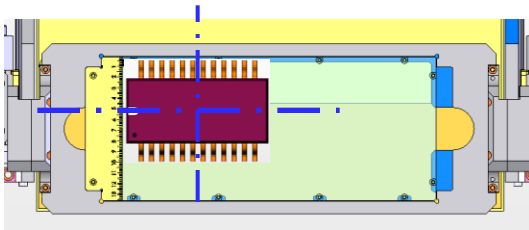


fast normal slow

X axis : move to the right/ left

Y axis : move forward/backward

Z axis : move up/down

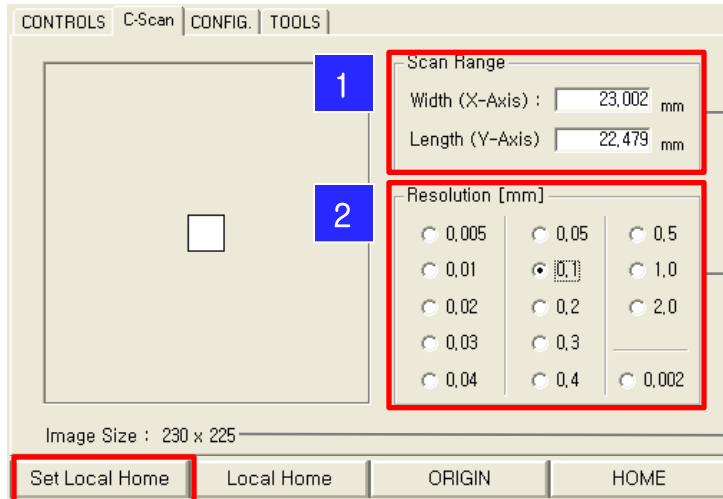


Translocate the probe above the material by using the motion control button.



5. Set the scan range

1. Put the width and height value of a sample.
2. Select the resolution.
3. Set the starting point.



Width and height of testing range

Select the resolution

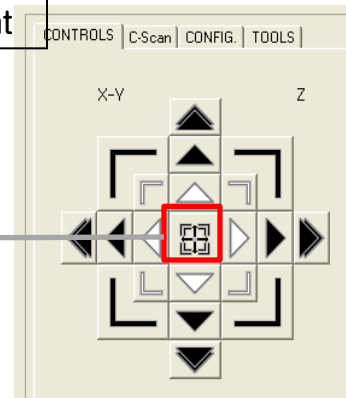
Image size

Set the starting point

3

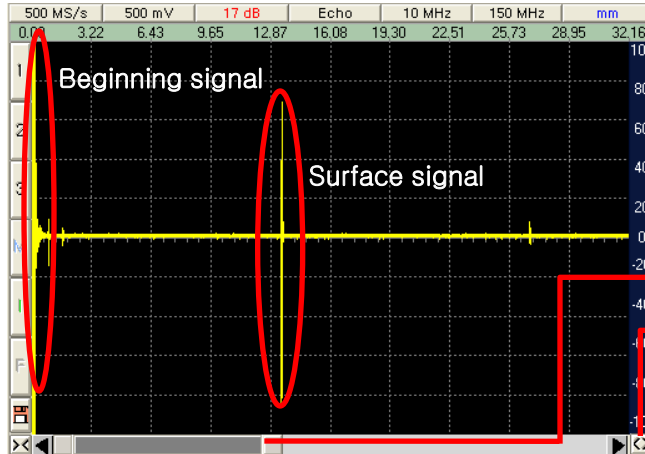
If you use the auto sizing function in the motion control tab, it automatically figure the size of the sample.

Auto sizing





6. A-Scan signal



Maximize the A-Scan range, then check the surface signal.

(please contact us when there is no signal even after you remove the bubble under the sensor.)

The method of maximizing the range

Drag the both sides of the scroll (@ and ©) and locate the edge of both sides(left/right).

Click the <> button.



Set the range by the surface signal basis.

The method of setting the attention range.

Expand the surface signal by dragging the both sides of the scroll (@, ©).

Click the right button of the mouse to make the cursor magnifying glass.

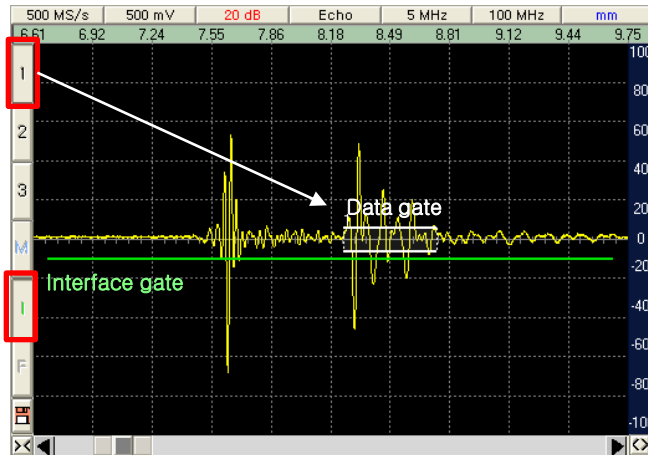
Set the range by dragging with the left button of the mouse.



* If you need further information related to the signal, please refer to the manual.



7. Set the gate



Height of the gate

Interface gate : usually 10~25%

Data gate : usually 5~10%

Only higher signal than the set-up gate is detected.

The method of drawing the gate.

Click the button, then the cursor will appear as +. Draw the gate by dragging with the left button of the mouse.

If you click the gate you drew, you can change the location and size of it.

Interface Gate

Draw the interface gate long enough starting from the front of the surface signal.

Do not draw the interface gate too short than it can get out of the signal in progress of scanning.

Set the height of the interface gate over the surface signal.

Data Gate

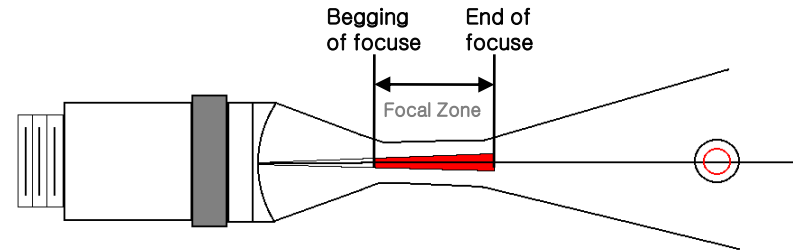
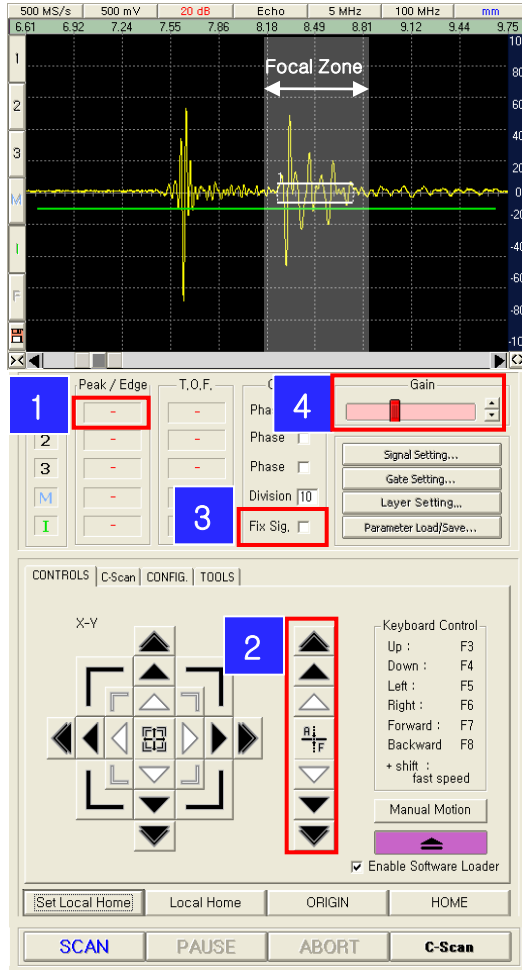
Draw the data gate over the signal range that you want to get the scanning image.

In the reference picture, the data gate is set over the signal which is next to the surface signal.

- If the interface gate is too long, it has a bad effect to the scanning speed, as it gains a heavy use of arithmetic operation.
- If the interface gate is too short, the scanning image will appear black, as it gets out of the signal in progress of scanning.



8. Focusing



Focusing

In order to get the accurate scanning image, adjust the sensor to make the signal over the data gate locate in the focal zone.

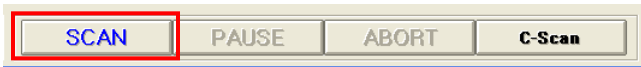
[2] If you move the probe up/down by using Z axis button in the motion control pad, the signal strength changes. Appropriate focal point is the position when the peak value [1] is the highest.

[3] fix signal function is for stopping the signal from moving to the left/right when Z axis is moving, and making the background move instead.

[4] If the peak value is over 100% or below 40% after focusing, adjust the gain to set the peak value at about 60~80%



9. Start the scanning and save the result



[SCAN] click the SCAN button and start the scanning.

If the locations of X and Y axis are not 0 before the scanning, pop-up comes on to ask you if you want to reset the starting point at current position.



Save as *.scn which is ScanUp file format. It can be read by the viewer program for this format.

Save as *.jpg, *.bmp which are public image file.



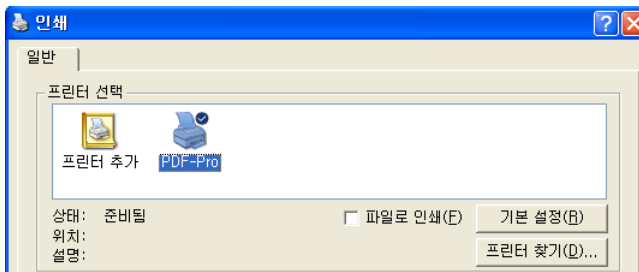
Write out the report.

Look ahead the report.



Print : print out or save the report as the PDF file.

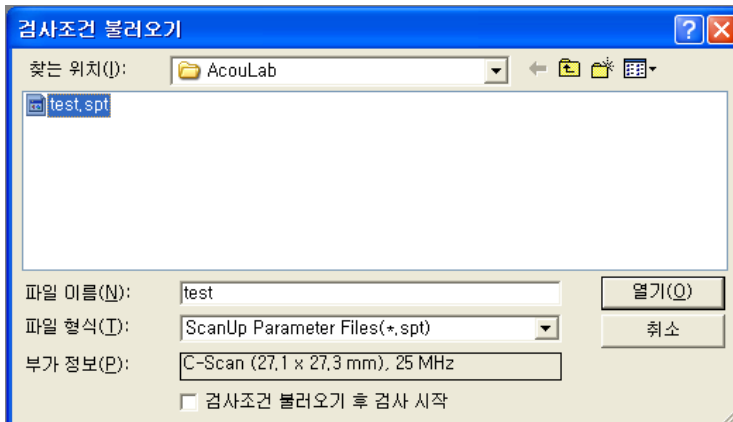
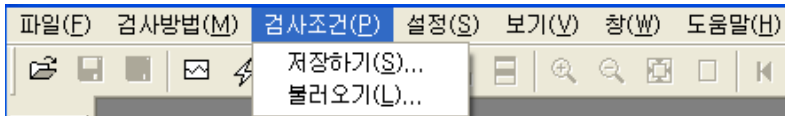
Capture : save the report as the image file.



If you select 'PDF' on the print window, you can save the report as the PDF file.



10. Read/Save the Testing Condition



Testing condition

You can save and read every single testing conditions including size of a sample, starting point, resolution, location and range of a gate, focus and so on

If you use this function, it has *.spt extension and each axis goes to the limit and turns back in order to get the positional information.

Read

Click the 'read the testing condition' button or select the 'read' in the 'testing condition' category. Select the *.spt file in the window and click the 'open' button. After each axis finishes the auto motion, it will start the testing.

Save

Select the 'save' in the 'testing condition' category. Select or make the saving folder and click the 'save' button. After each axis finishes the auto motion, it will complete the saving.



Supplement. Pulser / Receiver Master Reset.

UT-320 Master Reset

1. Turn off the instrument using the rear panel power switch.
2. Locate the master reset button on the rear panel opposite the main power switch.
3. Press and hold the reset button for approximately 6 seconds.
4. Turn on the instrument's main power using the rear panel power switch.
5. Press the power button on the front panel to restart the instrument.

UT-340 Master Reset

1. Turn off the instrument using the rear panel power switch.
2. While holding the 'F1' key on the front panel, turn on the rear panel power switch.
3. Continue holding the 'F1' key for approximately 2 seconds.
4. Release the 'F1' key and press the '6' key on the numeric keypad.
5. After approximately 8 seconds, the instrument will beep twice and the display will come up in pulser mode with all variables set to their minimum values.
6. If the 'F1' key is not held for at least 2 seconds, the instrument will continue with a normal power-up sequence.
7. If the '6' key is not pressed within 3.5 seconds, or if any other key is pressed, the instrument will continue with a normal power-up sequence.

External Trigger

Trigger is normal state.

1. [Set the Signal] click this button.
2. [External Trigger] click this button to activate P/R signal.
3. If there is sensor information in ScanUp program, select once more the sensor information, so that the setting value can be adjusted to Pulser / Receiver.